

PURE BRIGHT[®]

GERMICIDAL ULTRA BLEACH

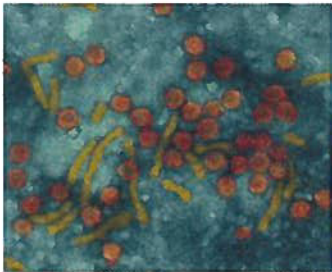
NOW KILLS:



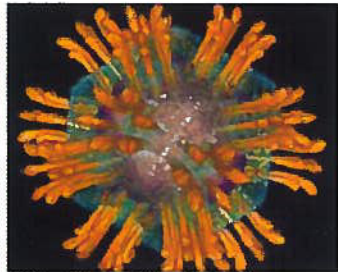
C.Diff. Spore



MRSA



Hepatitis B



Hepatitis C



This product when used as directed on hard, non-porous surfaces is effective at killing the following:

| |
|--|
| <p>FUNGICIDAL</p> <ul style="list-style-type: none"> • Trichophyton mentagrophytes (Athlete's foot fungus) • Aspergillus brasiliensis (mildew) |
| <p>BACTERICIDAL</p> <ul style="list-style-type: none"> • Clostridium difficile spore (C.Diff Spore) • Methicillin Resistant Staphylococcus aureus (MRSA) • Escherichia coli O157:H7 (E. coli) • Pseudomonas aeruginosa (pseudomonas) • Salmonella enterica (salmonella) • Shigella dysenteriae • Staphylococcus aureus (staph) • Streptococcus pyogenes (strep) |
| <p>VIRUCIDAL</p> <ul style="list-style-type: none"> • Adenovirus type 2 • Avian Influenza A virus • Canine Parvovirus • Cytomegalovirus • Feline Panleukopenia virus (Parvovirus) • Hepatitis A virus • Hepatitis B virus (HBV) • Hepatitis C virus (HCV) • Herpes simplex virus Type 1 (herpes) • Herpes simplex virus Type 2 (herpes) • Human Immunodeficiency Virus type 1 (HIV-1) • Influenza A virus (Strain Hong Kong) • H1N1 Influenza A virus • Poliovirus type 1 • Respiratory syncytial virus • Rhinovirus type 37 • Rotavirus |



PURE BRIGHT®

GERMICIDAL ULTRA BLEACH



SPECIFICATIONS

6 Pack of 96oz Bottles

| |
|--|
| Chep Pallet Item Number: 23133575541 |
| Non-Chep Pallet Item Number: 23133575542 |
| Net Contents: 96 FL OZ |
| UPC: 0-59647-21002-0 |
| GTIN: 1-00-59647-21002-7 |
| EPA Registration Number: 70271-13 |

Easy pour, splash resistant spout
Induction Heat Sealed Closure

| |
|--|
| Unit Dimensions: 6.1 x 6.1 x 9.8 inches |
| Bottles per Case: 6 |
| Case Dimensions: 18.8 x 12.8 x 10.5 inches |
| Case Weight: 44.5 pounds |
| Case Cube: 1.46 cubic feet |

| |
|---------------------------|
| Cases per Pallet Layer: 7 |
| Layers per Pallet: 6 |
| Cases per Pallet: 42 |

| |
|--|
| Pallet Dimensions: 48 x 40 x 68.5 inches |
| Pallet Weight: 1,934 pounds |
| Pallet Cube: 76.1 cubic feet |

4 Pack of 128oz Bottles

| |
|--|
| Non-Chep Pallet Item Number: 11008635391 |
| Net Contents: 128 FL OZ |
| UPC: 0-59647-21014-3 |
| GTIN: 1-00-59647-21014-0 |
| EPA Registration Number: 70271-13 |

Easy pour, splash resistant spout
Induction Heat Sealed Closure

Unit Dimensions: 6.1 x 6.1 x 11.9 inches

| |
|--|
| Case Dimensions: 12.9 x 12.9 x 12.6 inches |
| Bottles per Case: 4 |
| Case Weight: 38.1 pounds |
| Case Cube: 1.18 cubic feet |

| |
|----------------------------|
| Cases per Pallet Layer: 12 |
| Layers per Pallet: 4 |
| Cases per Pallet: 48 |

| |
|--|
| Pallet Dimensions: 40.0 x 50.3 x 54.3 inches |
| Pallet Weight: 1,893.8 pounds |
| Pallet Cube: 63.10 cubic feet |

6 Pack of 128oz Bottles

| |
|--|
| Chep Pallet Item Number: 11008635041 |
| Non-Chep Pallet Item Number: 11008635042 |
| Net Contents: 128 FL OZ |
| UPC: 0-59647-21014-3 |
| GTIN: 2-00-59647-21014-7 |
| EPA Registration Number: 70271-13 |

Easy pour, splash resistant spout
Induction Heat Sealed Closure

Unit Dimensions: 6.1 x 6.1 x 11.9 inches

| |
|--|
| Case Dimensions: 18.8 x 12.8 x 12.6 inches |
| Bottles per Case: 6 |
| Case Weight: 58.5 pounds |
| Case Cube: 1.75 cubic feet |

| |
|---------------------------|
| Cases per Pallet Layer: 7 |
| Layers per Pallet: 4 |
| Cases per Pallet: 28 |

| |
|--|
| Pallet Dimensions: 48 x 40 x 56 inches |
| Pallet Weight: 1,638 pounds |
| Pallet Cube: 62.22 cubic feet |

PROFESSIONAL PRODUCTS FROM KCP LABORATORIES.

For questions, comments, ordering, MSDS information please call us at 1-800-276-8260 or www.kikcorp.com

©2010 KIK Custom Products